



DUET AUTOFEED

PRECISE, EFFORTLESS CUTTING

DUET AUTOFEED

PATTERN CARD CUTTER

The Duet AutoFeed Cutter precise, smooth and effortless Cutting and Marking of a wide variety of Cards and Plastics. With a choice of Pen or Inkjet Annotation. Standard Card can be cut up to 0.6 mm thickness and Plastics/Vinyls up to 1 mm thick.

The Card is automatically pulled from the Roll 'Autofeed' to keep a continuous flow of cutting and plotting of annotation. Due to the 'Autofeed' Pattern lengths are un-limited (up to roll length).

The Flatbed Design ensures no movement of the material whilst cutting and this aids the cutting of more difficult materials as the Vacuum holds the material in place.

The Twin Inkjet Head option increases throughput with the printing of annotation at very high speed.

The Carbide Steel tipped Blade glides over the tables surface cutting and closing shapes for clean instant removal. A wide range of Blade pressure settings provide versatile cutting ability. Low running cost with easily obtainable replacement blades.

Two speed versions are offered, the fastest using high speed Servo Motors for the fastest throughput.

The 'Autofeed' Design enables long lengths to be cut on a table far smaller than would normally be required and hence a huge space saving on the overall foot print.

Compatible with a wide variety of Softwares.

Plus our Ptech Program for file management and control of cut sequence, tool option, etc is provided free of charge with life-time up-dates available to download via our Web Site. The Ptech Software enables the compatibility with most HP-GL, DM-PL, Gerber files and also files made from CAD software such as AutoCAD plus the majority of Textile Softwares.

KEY FEATURES

- Autofeed – Cutting long lengths larger than physical table size
- Simple Keypad Control
- Low Cost Blade replacement
- Compatible with Leading Software
- Life-Time Ptech Software Control Program up-dates

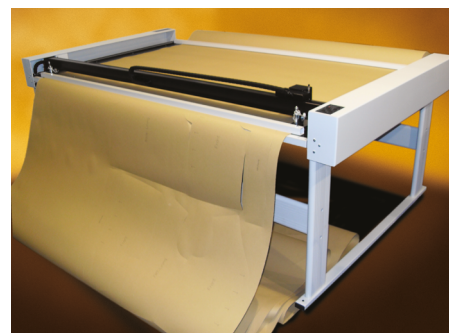
**PLOTTER
TECHNOLOGY**

STANDARD TABLE (custom sizes available)

| Model | Duet 1800ST / 1800SE PRO | Duet 1200ST / 1200SE PRO |
|--------------------------|-------------------------------|-----------------------------|
| Cutting Area | 1820mm x 900mm (71.5"x 35.5") | 1220mm x 900mm (48"x 35.5") |
| Max Material Size | 1850mm x Roll length (73") | 1250mm x Roll length (49") |
| Table Size (Floor Space) | 2230mm x 1420mm (88"x 56") | 1630mm x 1420mm (64"x 56") |

PLOTting SPEED

| Model | Duet ST | Duet SE PRO |
|---------------|-------------------------|-------------------------|
| Maximum Speed | 56cm/s (40cm/s on Axis) | 70cm/s (50cm/s on Axis) |
| Acceleration | 0.25g | 1g (Servo) |



GENERAL SPECIFICATIONS FOR ALL MODELS

| | |
|------------------------|--|
| Cutting Thickness | Card up to 0.6mm, soft plastics up to 1mm |
| Two Tools as standard | Carbide Steel Blade and Pen |
| Optional | Twin Inkjet Head HP 45 Type (replaces Pen) |
| Language | HPGL, DMPL and AP300 Gerber** |
| Input Voltage | 100-260 VAC @ 50-60HZ |
| Addressable Resolution | 0.025mm |
| Accuracy | 0.1% (User Calibration Possible) |
| Repeatability | 0.1mm |
| Pen Type | BIC Biro Types |
| Operating Temp. | 0 - 40 Degree (32 - 104F) |
| Vacuum Pump | 500w - 1000w (Supplied) |

**Gerber recognised trademark